

So how to prepare for next summer? A guide to Heritage Garden Plants 2007 ACT Government. Australian Capital Territory, Heritage Unit, Canberra states that 'there is an increasing awareness in Canberra of our heritage suburbs, and of the desirability of using plan species and having garden styles appropriate to the period in which the house was built'. This guide comes with a complete list of plants that were used in Canberra heritage suburbs. It also lists those plants that have invasive habits and which are not recommended and are even prohibited species in the ACT. They are: Coteoneaster, Cytisus & Genister (broom) species, *Hedera helix* (English ivy), *Ligustrum lucicum* and *Ligustrum sinense* (broad-leaf and small-leaf privet, various *Pyracantha* species (firethorn), *Pinus radiata*, *Ulex europaeus* (gorse) and *Vinca major* (periwinkle).

So once you have got rid of your weeds – yes, this can be quite an exercise – you can find some very sound advice in the Victorian Government's 'Watering Heritage Gardens' fact sheet (www.dpcd.vic.gov.au/data/assets/pdf_file/0006/133728/Watering_Heritage_Gardens.pdf) which includes the following points:

- monitor the water requirements of the plants in your garden
- if plants die, determine why they died, and replant according to what you have learnt
- if plant loss is a result of drought and a lack of moisture, replace plants with the same species and improve watering efficiency for the replacement plants
- when replanting, group plants with similar water requirements together. For example, plant hydrangeas and other water-demanding plants in areas that drain slowly.

Caring for or replacing trees TAMS is on record stating that our mature street trees have their roots well into the water table; however, any replacement plantings require watering until well established. Please let us know if you require replacements for street trees particularly the blue Atlas cedar (*Cedrus atlantica* 'Glauca' (see www.burkesbackyard.com.au/factsheets/Trees-and-Palms/Blue-Atlas-Cedar/918 for further information) as we are aware that, in some instances, the wrong cultivar has been planted along Euree Street.

Flowering and foliage shrubs If you need to replace plants you may like to consider some of the plants listed in gardens that were being established in the late 1920s and 1930s not really so very far from Reid. The information on early plantings has been gleaned from maps available in the ACT Heritage Library Map and Plan Collection.

Plantings at Ainslie School and along the Federal Ave nr National Circuit included: *Amygdalis*; *Arbutus unedo*; *Berberis*; *Buddleia*; *Ceanothus*; *Cercis siliquastrum*; *Choisya*; *Cotinus coggygria* syn. *Rhus cotinus*; *Deutzia crenata*; *Exochorda grandiflora*; *Jasminum* sect. *Primulina*; *Lonicera grandiflora* (& possibly *fragrantissima*); *Ribes*; *Prunus cerasifera* 'Pissardii' (purple-leaved plum); *Photinia*; *Pyrus aucuparia* (now known as *Sorbus aucuparia*); *Spiraea corymbosa* (probably *S. betulifolia* var. *corymbosa*); *Syringa*; *Tamarix plumose*; *Viburnum tinus*; *Vitex agnus-castros* & *Weigela rosea*.

Roses and wisteria were planted in many early Canberra gardens. Varieties are not usually specified but if you do have room in your garden for more roses you may like to check out the stunning roses released by the Australian rose breeder, Alister Clark (1864-1949). The tennis courts, in both the Senate and House of Representatives Gardens at Old parliament House, are planted with various Alister Clark roses - see: www.nationalcapital.gov.au/downloads/education_and_understanding/tours/Old_Parliament_Walk.pdf.

Bulbs etc. Old Parliament House also received a gift of prize tulips from Holland's Queen Wilhelmina but, as noted by The Mail (Adelaide, SA), they seemed to have met with an uncertain fate. trove.nla.gov.au/ndp/del/article/55937536. The 1928 dahlia plantings at the Hotel Canberra to Billabong Bridge included the following: Crimson Star, Lucifer, Ormond modern (according to catalogues held in the National Library of Australia some 100 varieties were once available from the Ormond Plant Farm Pty Ltd Vic), Ballarat Star, Marie Houtman, Pink Star, Southern Star.

Native species The lists of trees, climbers and hedge species in the ACT A guide to Heritage Garden clearly identify the Australian species as well as useful information as to height and form.



REID RESIDENTS' ASSOCIATION INC

NEWSLETTER SEPTEMBER 2014

Formed 14 August 1944

ISSN 1030-0651.

REDEVELOPMENT BLOCK 6 SECTION 3 PARKES

The ACT Government has announced plans for development of the existing unsealed carpark opposite the CIT on Constitution Avenue. We understand the project will provide 8 storey buildings with 200-300 inner city apartments for 600-700 people and there will be 400-500 parking spaces. There may also be public parking for a further 400-500 vehicles. Presumably this is intended for the new football stadium to be built on the Swimming Pool site.

The project is part of the redevelopment of Constitution Avenue to:

- Establish Constitution Avenue as a diverse and active grand boulevard lined with shops, cafes and a mix of commercial, entertainment and residential uses.
- Establish Constitution Avenue as a prestigious address for National Capital Uses.
- Link education and high-tech employment clusters located in the corridor between the Australian National University and the Canberra International Airport.
- Establish Constitution Avenue with higher density development, public transport, broad tree-lined footpaths and outdoor dining and street parking.

While the RRA is not adverse to the redevelopment of the carpark we are concerned that the project does in fact achieve high international standard planning and design as well as quality social outcomes that respect the views and needs of both the existing as well as incoming residents.

The RRA is particularly concerned the plan includes future construction of a road linking Constitution Avenue with Amaroo Street. This would inevitably result in "rat running", traffic, parking, noise, pollution impacts as well affecting the heritage significance of the Reid Heritage Precinct.

The Committee is making submissions to both ACTPLA and the NCA. In addition we have met with the NCA Chief Executive Mr Malcolm Snow. We are proposing that the existing strip of landscaped open space along Amaroo Street immediately behind the CIT should be formally designated as a park. This area was part of the original railway line to Civic and has historical significance. Anyone with other knowledge about this history is urged to contact either Graham Carter or Joanne Nicholls. For further information see: <http://www.lda.act.gov.au/en/parkes-section-3>

REID – SUBURB DINNER

Come and enjoy!!!! Bring your friends, meet your neighbours!!!
 Date: **Tuesday 7 October at 7pm**
 Location: Mercure Ainslie Hotel Bistro, Cnr Ainslie Ave and Limestone Ave
 Cost: Meals at bistro prices plus your own drinks
 RSVP: Sue Byrne on telephone _____ by Monday 6 October

President
John Little

Secretary
Graham Carter OAM

Treasurer & Public Officer
Derk Swieringa

Committee Members

Marianne Albury-Colless, Sue Byrne, Sue Lynskey, Joanne Nicholls, Amanda Reynolds, John Tucker




JOURNEY HOME
 INTERIOR DESIGN

(02) 6156 2379
 36 Coranderrk Street Reid ACT 2612
journeyhomeinteriors@gmail.com

www.journey-home.com.au
 Journey Home Pty Ltd ABN 37 158 130 119

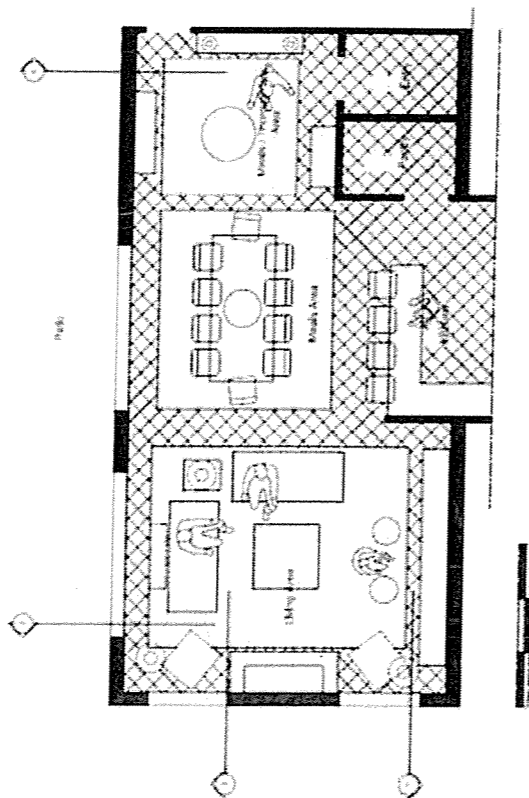
TO RENOVATE OR NOT TO RENOVATE THAT IS THE QUESTION?

Renovating has become the great Australian past time. Clearly the amount of funds available is the major factor in deciding whether to venture there or not. Currently I am working on a project where NO was the answer.

I was called in to do a renovation design for a country home, however the problems were basically aesthetic and functionality issues could be resolved with alternate furniture arrangements. (Pictured) By introducing new furnishings and window treatments we can achieve a beautiful and functional room for half the cost of renovating.

This got me thinking, are we too quick to get the sledge hammer out? Do we forget that even when we renovate we still have to furnish the place anyway?

Things to consider when deciding whether to renovate are: What factors are affecting the functionality of the space? Could the same outcome be achieved by refurnishing? If deciding to renovate, your budget should factor in new furnishings and window treatments to complete the picture. Part of my role as an Interior designer is to make budgets work so if you are thinking of renovating why not call in for a chat. Nadine, Journey Home, 36 Coranderrk St.



AGM RESULTS

The Annual General Meeting of the Reid Residents Association (RRA) was held on 26 March 2014. The outcome of the elections was that there is no change in committee membership for the forthcoming year ie President, John Little, Secretary Graham Carter, Treasurer & Public Officer Derk Swieringa Committee: Members Marianne Albury-Colless, Sue Byrne, Sue Lynskey, Joanne Nicholls, Amanda Reynolds, and John Tucker were all re-elected. Thank you everyone for your contributions over the last year and congratulations.

WORKSHOP: CONSERVATION MANAGEMENT PLANNING: the What, Why and How for Historic Gardens, Landscapes and Buildings

The term Conservation Management Plan (CMP) is frequently used in the "heritage business" but is foreign to most of us. Just what are CMPs? How do they work? Why do we need to know about them? The ACT Monaro Riverina Branch of the AGHS has put together a workshop to help answer some of these questions. Speakers include: Dr Dianne Firth; Stuart Read; George Pooley; Paul Scannell and Eric Martin AM.

Saturday 27 September, 8.45am-2pm at St John's Reid

For information download the program and registration form:
<https://www.gardenhistorysociety.org.au/category/detail/27>

SUPPORT REID – Become a sponsor or donor

The Committee gratefully acknowledges a recent donation by a resident. The Reid Residents Association is your organization and it needs your support. Each year it costs about \$2,000 to pay for insurance, printing newsletters, audit etc. We are looking for people and local businesses, who might be able provide assistance in either cash or kind to assist with our operational costs. Exclusive advertising will be provided in this newsletter for sponsors. If you can help please contact: Derk Swieringa

9th ANNUAL OPEN HOUSES AND GARDENS IN REID

Sunday 2 November 2013 1.30pm to 4.30 pm,

Fancy an afternoon walking in Reid to view two privately owned heritage-listed houses and gardens and one new modern home not included in the heritage precinct of Reid which have not previously been opened for this event? Also listening to short presentations by experts on the Heritage of Reid, living in the Precinct and the work of the Trust in helping to conserve our garden city suburbs as well as meeting the owners of the three houses and gardens? All of this to be followed by a delicious afternoon tea!

Then make sure you book at the National Trust (ACT) Office, 1st floor, North Building, Civic, or telephone the Trust Office 6230 0533 between 9.30am and 3pm. Cost is \$25 per person for members of the National Trust, U3A and Reid Residents' Association and \$35 per person for non-members and includes a copy of Shibu Dutta's "The Heritage of Reid" in the ticket price. Most credit cards are accepted. This annual event is popular and all proceeds go to the RRA and National Trust (ACT) and the Reid-Preschool for putting on the afternoon tea. Hand-outs will be provided on each house and garden.

REID HISTORY BOOK – GET YOUR COPY

Through the kind sponsorship of Ms Holly Komorowski Sales Consultant. Luton Properties the RRA has been able to produce a new edition of its publication "The Heritage of Reid". By Shibu Dutta. It contains the history of the suburb and has wealth of information. Buy your copy from Derk Swieringa Treasurer

If you have any real estate questions or if you're thinking of selling or know someone who is, give Holly a call and don't forget to mention the Reid Residents Association. Contact Holly direct on 62300005 or email at holly.komorowski@luton.com.au

REID GARDENS AND HERITAGE CONSIDERATIONS

What a magnificent autumn we have just had! Summer, however, seemed to be an endless round of watering and, despite best efforts with shade cloth, we still lost quite well established plants. Many of the softer-leaved varieties appeared to have been touched by an imp equipped with a blow torch.

The Bureau of Meteorology notes that during the 2013-14 summer we experienced:

- the third-warmest summer on record for mean maximum temperatures
- a record-breaking numbers of days above 35 °C, 38 °C and 40 °C
- two record-breaking hot spells
- well below average rainfall and the driest summer since 2002-03.

See www.bom.gov.au/climate/current/season/act/summary.shtml for further information.